

50 Hz AIR CONDITIONING CONDENSING UNIT

230 Volt, 1-phase, 50 Hz in 3 tons
400 Volt, 3-phase, 50 Hz in 3, 4, 5 tons

REFRIGERATION CIRCUIT

- High efficiency compressors - durable, proven technology
- Copper tube / aluminum fin coil
- Suction line accumulator
- High pressure bypass circuit to allow continuous operation in extreme ambient conditions
- High and Low pressure switches for enhanced component protection
- Approved for operation to 52° C outdoor ambient

BUILT TO LAST

- Painted galvanized steel on the outdoor unit
- Sturdy base rails

EASY TO INSTALL AND SERVICE

- External service valves with gauge ports
- Factory charged with R-22 refrigerant



OUTDOOR UNIT MODEL NUMBER IDENTIFICATION GUIDE											
Digit Position:	1	2	3	4	5	6	7	8	9	10	11
Example Part Number	H	D	C	2	A	0	3	6	J	P	A
HDC - Horizontal Duct Free Outdoor			TYPE								
R-22			REFRIGERANT								
A = Cooling Only				UNIT TYPE							
0 = Standard Efficiency				OUTDOOR UNIT SEER							
36 = 36,000 btu = 3 Tons											
48 = 48,000 btu = 4 Tons											
60 = 60, 000 btu = 5 tons						CAPACITY in 1000 btu					
W = 220v-1ph-50hz											
Z = 380/420-50-3						VOLTAGE					
P = Pressure Control Factory Installed						ACCESSORY CODE					
A						Sales Code					

UNIT SPECIFICATIONS

ICP MODEL NUMBER		HDC2A36WPA	HDC2A36ZPA	HDC2A48ZPA	HDC2A60ZPA
Electrical Data	Volts-Phase-Hz.	240-1-50	400V-3ph-50Hz		
	Voltage Utilization Range	220-240V	360-440V		
	Total Unit Amps	18.0	14.5	9.77	11.6
	Minimum Circuit Ampacity	24.2	18.2	12.5	16.1
Compressor	Quantity/Type	1-Scroll	1-Recip	1-Scroll	1-Scroll
	Compressor Model	ZR42K3	CR47KQ	ZR61KC	C-SB453H8A
	Rated Load Amps	15.2	8.2	8.8	9.7
	Locked Rotor Amps	97.0	50.0	62	69
	# Refrigeration Circuits	1	1	1	1
Fan	Quantity	2	2	2	2
	Diameter mm (each)	472	472	472	472
	RPM	940	940	940	940
	CMH (total)	7000	7000	7000	7000
Coil	Face Area (Sqm)	0.89	0.80	0.89	0.91
	Fins per mm -rows	.556 -2	.714 -2	.556 -2	.556 -3
	Tube Diameter (mm)	9.52	9.52	9.52	9.52
Refrigerant	Type	R22			
	Shipping Charge (kg)	4.45	3.35	4.55	5.6
	Operating Charge (kg)	4.40	3.30	4.5	5.6
	Connection size liquid/suction (mm)	12 / 19	12 / 19	12 / 19	12 / 19
Unit	Minimum Outdoor Ambient deg C	-5	-5	-5	-5
	Maximum Outdoor Ambient deg C	52	52	52	52
	Low Pressure Control	yes	yes	yes	yes
	High Pressure Control (y/n)	yes	yes	yes	yes
	Sound Level (dBa predicted at 1m)	62	62	64	65
Physical Dimensions	Ship Weight (Kg)	100	100	123	134
	Package Height (mm)	1280	1280	1280	1280
	Package Width (mm)	1100	1100	1100	1100
	Package Depth (mm)	450	450	450	450
	Container Loading 20ft/40ft/40ft HC	50/104/104	50/104/104	50/104/104	50/104/104
	Net Weight (Kg)	90	90	112	123
	Height (mm)	1250	1250	1250	1250
	Width (mm)	950	950	950	950
Depth (mm)	412	412	412	412	

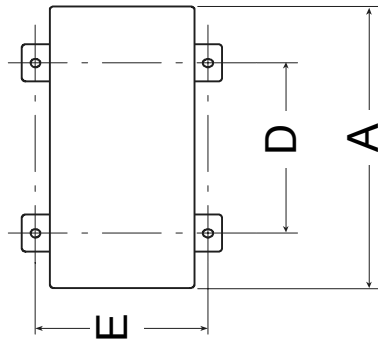
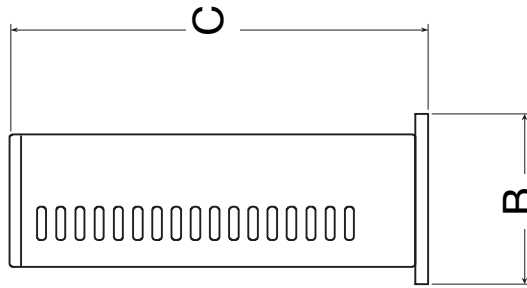
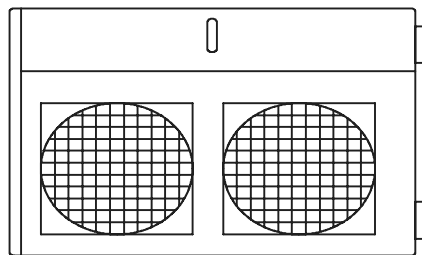
AVAILABLE MATCHES		HDC2A036W	HDC2A036Z	HDC2A048Z	HDC2A060Z
Standard Ducted Fan Coil 	EBW3600A EBW4200A	EBW3600A EBW4200A	EBW4800A EBW6000A	EBW6000A	
	FSHP2W3600 FSHP2W4200	FSHP2W3600 FSHP2W4200	FSHP2W4800 FSHP2W6000	FSHP2W6000	

DESIGN CONSIDERATIONS

Minimum outdoor operating temperature without low ambient control accessory = 55 °F / 12.8 °C.
 Maximum outdoor ambient operating temperature for continuous operation = 125 °F / 52 °C.
 Consult Long Line Application Guideline when vertical separation between indoor and outdoor unit is greater than 20 ft / 6.1 m.
 Factory refrigerant connection sizes good for up to 80 ft / 24.4 m line length.
 Consult Long Line Application Guideline for line lengths beyond 80 ft / 24.4 m.
 Factory installed orifice expansion device in the indoor unit is suitable for matched indoor/outdoor.
 If indoor/outdoor units are mix-matched, a change to the indoor unit orifice may be required.

Dimensions

	HDC2A036WPA	HDC2A036ZPA	HDC2A048WPA	HDC2A060ZPA
A	950	950	950	950
B	412	412	412	412
C	1250	1250	1250	1250
D	572	572	572	572
E	378	378	378	378



Combination Ratings‡

HDC2A CAPACITY TABLE									
Outdoor Unit	Indoor Unit	Nominal Air Flow		Cooling Capacity 95dgF/35degC					
				Capacity			Power Input kw		
		CFM	L/S	Btuh	kW	EER	Total	Compressor	Indoor Fan
HDC2A036WPA	EBW3600A	1210	571	35,500	10.4	10.1	3.52	3.08	0.44
	FSHP2W3600A/B	1076	508	33,800	9.9	9.4	3.59	3.20	0.39
HDC2A036ZPA	EBW3600A	1210	571	35,500	10.4	10.1	3.52	3.08	0.44
	FSHP2W3600A/B	1076	508	33,800	9.9	9.4	3.59	3.20	0.39
HDC2A048ZPA	EBW4800A	1622	765	50,500	14.8	10.0	5.07	4.48	0.59
	FSHP2W4800A/B	1557	735	50,000	14.7	9.8	5.11	4.54	0.57
HDC2A060ZPA	EBW6000A	1788	844	55,600	16.3	9.3	6.01	5.36	0.65
	FSHP2W6000A/B	2025	956	55,600	16.3	9.1	6.10	5.36	0.74
Outdoor Unit	Indoor Unit	Nominal Air Flow		Cooling Capacity 115dgF/46degC					
				Capacity			Power Input kw		
		CFM	L/S	Btuh	kW	EER	Total	Compressor	Indoor Fan
HDC2A036WPA	EBW3600A	1210	571	31,200	9.1	8.2	3.81	3.37	0.44
	FSHP2W3600A/B	1076	508	29,700	8.7	7.6	3.89	3.50	0.39
HDC2A036ZPA	EBW3600A	1210	571	31,200	9.1	8.2	3.81	3.37	0.44
	FSHP2W3600A/B	1076	508	29,700	8.7	7.6	3.89	3.50	0.39
HDC2A048ZPA	EBW4800A	1622	765	44,400	13	8.1	5.49	4.90	0.59
	FSHP2W4800A/B	1557	735	44,000	12.9	8.0	5.51	4.94	0.57
HDC2A060ZPA	EBW6000A	1788	844	48,900	14.3	7.5	6.52	5.87	0.65
	FSHP2W6000A/B	2025	956	48,900	14.3	7.4	6.61	5.87	0.74

‡ Ratings are net values reflecting the effects of circulating fan heat. Supplemental electric heat is not included. Ratings are based on: **Cooling Standard:** 80 °F (27 °C) DB, 67 °F (19 °C) WB indoor entering air temperature and 95 °F (35 °C) DB air entering outdoor unit.

Detailed Cooling Capacities

Airflow		Ambient Air Temperature Deg F/C Dry Bulb																																									
		75				85				95				105				115				125																					
		65		18		24		29		35		41		46		51		57		63		69		75		81		87		93		99		105		111		117		123			
IDB	F/C	59	63	67	71	75	79	83	87	91	95	99	103	107	111	115	119	123	127	131	135	139	143	147	151	155	159	163	167	171	175	179	183	187	191	195	199	203	207				
70	Deg F	59	63	67	71	75	79	83	87	91	95	99	103	107	111	115	119	123	127	131	135	139	143	147	151	155	159	163	167	171	175	179	183	187	191	195	199	203	207				
	Deg C	15	17	19	22	24	26	29	31	33	35	37	39	41	43	45	47	49	51	53	55	57	59	61	63	65	67	69	71	73	75	77	79	81	83	85	87	89	91	93			
21	MBh	33.8	35.0	36.4	-	33.0	34.2	37.5	-	32.2	33.4	36.6	-	31.4	32.6	35.7	-	29.8	30.9	33.9	-	27.6	28.7	31.4	-	23.8	24.7	27.0	-	-	-	-	-	-	-	-	-	-	-	-	-	-	
	kW Capacity	9.9	10.3	11.2	-	9.7	10.0	11.0	-	9.4	9.8	10.7	-	9.2	9.5	10.5	-	8.7	9.1	9.9	-	8.1	8.4	9.2	-	7.0	7.2	7.9	-	-	-	-	-	-	-	-	-	-	-	-	-	-	
75	S/F	0.73	0.61	0.42	-	0.75	0.63	0.44	-	0.77	0.65	0.45	-	0.80	0.67	0.46	-	1.00	1.00	1.00	-	1.00	1.00	1.00	-	1.00	1.00	1.00	-	-	-	-	-	-	-	-	-	-	-	-	-		
	kW Input	2.69	2.75	2.84	-	2.91	2.97	3.07	-	3.10	3.17	3.28	-	3.27	3.34	3.46	-	3.41	3.49	3.61	-	3.54	3.62	3.75	-	3.82	3.91	4.05	-	-	-	-	-	-	-	-	-	-	-	-	-	-	
23	MBh	34.3	35.4	36.3	41.1	33.5	34.5	37.4	40.1	32.7	33.7	36.5	39.2	32.0	32.9	35.6	38.2	30.4	31.3	33.8	36.3	28.1	28.9	31.3	33.6	24.2	24.9	27.0	28.9	-	-	-	-	-	-	-	-	-	-	-	-		
	kW Capacity	10.1	10.4	11.2	12.0	9.8	10.1	11.0	11.8	12.6	9.6	9.9	10.7	11.5	9.4	9.6	10.4	11.2	8.9	9.2	9.9	10.6	8.2	8.5	9.2	9.9	7.1	7.3	7.9	8.5	-	-	-	-	-	-	-	-	-	-	-	-	
80	S/F	0.83	0.74	0.56	0.36	0.86	0.77	0.58	0.37	0.88	0.79	0.60	0.38	0.91	0.81	0.61	0.40	0.94	0.84	0.64	0.41	0.95	0.85	0.64	0.41	1.00	1.00	1.00	0.67	0.44	-	-	-	-	-	-	-	-	-	-	-	-	
	kW Input	2.71	2.77	2.86	2.96	2.93	3.00	3.10	3.21	3.13	3.20	3.31	3.42	3.30	3.37	3.49	3.61	3.44	3.52	3.64	3.77	3.57	3.65	3.78	3.91	3.86	3.95	4.08	4.23	-	-	-	-	-	-	-	-	-	-	-	-	-	
26	MBh	35.0	35.7	36.2	40.8	34.1	34.9	37.3	39.8	33.3	34.1	36.4	38.9	32.5	33.2	35.5	37.9	30.9	31.6	33.7	36.1	28.6	29.2	31.2	33.4	24.6	25.2	26.9	28.7	-	-	-	-	-	-	-	-	-	-	-	-	-	
	kW Capacity	10.2	10.5	11.2	12.0	10.0	10.2	10.9	11.7	12.5	9.8	10.0	10.7	11.4	9.5	9.7	10.4	11.1	9.1	9.3	9.9	10.6	8.4	8.6	9.2	9.8	7.2	7.4	7.9	8.4	-	-	-	-	-	-	-	-	-	-	-	-	-
85	S/F	0.91	0.85	0.69	0.52	0.94	0.88	0.72	0.54	0.96	0.90	0.74	0.55	1.00	0.93	0.76	0.57	1.00	0.97	0.79	0.59	1.00	0.98	0.80	0.59	1.00	1.00	1.00	0.83	0.62	-	-	-	-	-	-	-	-	-	-	-	-	-
	kW Input	2.73	2.80	2.89	2.99	2.96	3.02	3.13	3.23	3.15	3.23	3.34	3.45	3.33	3.40	3.52	3.64	3.47	3.55	3.68	3.81	3.60	3.68	3.81	3.95	3.89	3.98	4.12	4.26	-	-	-	-	-	-	-	-	-	-	-	-	-	-
29	MBh	35.6	36.3	38.0	40.5	34.7	35.4	37.1	39.6	33.9	34.6	36.2	38.6	33.1	33.7	35.3	37.7	31.4	32.0	33.6	35.8	29.1	29.7	31.1	33.2	25.0	25.5	26.7	28.5	-	-	-	-	-	-	-	-	-	-	-	-	-	-
	kW Capacity	10.4	10.6	11.1	11.9	10.2	10.4	10.9	11.6	12.3	9.9	10.1	10.6	11.3	9.7	9.9	10.4	11.0	9.2	9.4	9.8	10.5	8.5	8.7	9.1	9.7	7.3	7.5	7.8	8.4	-	-	-	-	-	-	-	-	-	-	-	-	-
88	S/F	0.95	0.92	0.83	0.67	0.99	0.95	0.86	0.70	1.00	0.98	0.88	0.71	1.00	1.00	0.91	0.74	1.00	1.00	0.94	0.77	1.00	1.00	0.95	0.77	1.00	1.00	1.00	0.80	0.60	-	-	-	-	-	-	-	-	-	-	-	-	-
	kW Input	2.76	2.82	2.91	3.01	2.98	3.05	3.15	3.26	3.18	3.25	3.36	3.48	3.35	3.43	3.55	3.68	3.50	3.58	3.71	3.84	3.63	3.72	3.85	3.98	3.93	4.02	4.15	4.30	-	-	-	-	-	-	-	-	-	-	-	-	-	-

Alternate Fan Coil Factors		Airflow adjustment factors	
Model	Cap.	Power	Power
EBW4200A	1.01	1.00	0.99
FSHP2W4200A/B	1.02	1.01	1.00

Detailed Cooling Capacities (Cont.)

airflow		Ambient Air Temperature Deg F/C Dry Bulb																																																																																																																																																																																																																																																																																																																																																																																																																																																																																																																																																																																																																																																																																																																																																																																																																																																																																																																																																																																																																																																																																																																																																																																																																																																																																																																																																																																																									
		65					75					85					95					105					115					125																																																																																																																																																																																																																																																																																																																																																																																																																																																																																																																																																																																																																																																																																																																																																																																																																																																																																																																																																																																																																																																																																																																																																																																																																																																																																																																																																																											
		18					24					29					35					41					46					51																																																																																																																																																																																																																																																																																																																																																																																																																																																																																																																																																																																																																																																																																																																																																																																																																																																																																																																																																																																																																																																																																																																																																																																																																																																																																																																																																																											
IDB	F/C	Entering Indoor Air Temperature WB Deg																																																																																																																																																																																																																																																																																																																																																																																																																																																																																																																																																																																																																																																																																																																																																																																																																																																																																																																																																																																																																																																																																																																																																																																																																																																																																																																																																																																																									
70	Deg F	59	63	67	71	75	79	83	87	91	95	99	103	107	111	115	119	123	127	131	135	139	143	147	151	155	159	163	167	171	175	179	183	187	191	195	199	203	207	211	215	219	223	227	231	235	239	243	247	251	255	259	263	267	271	275	279	283	287	291	295	299	303	307	311	315	319	323	327	331	335	339	343	347	351	355	359	363	367	371	375	379	383	387	391	395	399	403	407	411	415	419	423	427	431	435	439	443	447	451	455	459	463	467	471	475	479	483	487	491	495	499	503	507	511	515	519	523	527	531	535	539	543	547	551	555	559	563	567	571	575	579	583	587	591	595	599	603	607	611	615	619	623	627	631	635	639	643	647	651	655	659	663	667	671	675	679	683	687	691	695	699	703	707	711	715	719	723	727	731	735	739	743	747	751	755	759	763	767	771	775	779	783	787	791	795	799	803	807	811	815	819	823	827	831	835	839	843	847	851	855	859	863	867	871	875	879	883	887	891	895	899	903	907	911	915	919	923	927	931	935	939	943	947	951	955	959	963	967	971	975	979	983	987	991	995	999	1003	1007	1011	1015	1019	1023	1027	1031	1035	1039	1043	1047	1051	1055	1059	1063	1067	1071	1075	1079	1083	1087	1091	1095	1099	1103	1107	1111	1115	1119	1123	1127	1131	1135	1139	1143	1147	1151	1155	1159	1163	1167	1171	1175	1179	1183	1187	1191	1195	1199	1203	1207	1211	1215	1219	1223	1227	1231	1235	1239	1243	1247	1251	1255	1259	1263	1267	1271	1275	1279	1283	1287	1291	1295	1299	1303	1307	1311	1315	1319	1323	1327	1331	1335	1339	1343	1347	1351	1355	1359	1363	1367	1371	1375	1379	1383	1387	1391	1395	1399	1403	1407	1411	1415	1419	1423	1427	1431	1435	1439	1443	1447	1451	1455	1459	1463	1467	1471	1475	1479	1483	1487	1491	1495	1499	1503	1507	1511	1515	1519	1523	1527	1531	1535	1539	1543	1547	1551	1555	1559	1563	1567	1571	1575	1579	1583	1587	1591	1595	1599	1603	1607	1611	1615	1619	1623	1627	1631	1635	1639	1643	1647	1651	1655	1659	1663	1667	1671	1675	1679	1683	1687	1691	1695	1699	1703	1707	1711	1715	1719	1723	1727	1731	1735	1739	1743	1747	1751	1755	1759	1763	1767	1771	1775	1779	1783	1787	1791	1795	1799	1803	1807	1811	1815	1819	1823	1827	1831	1835	1839	1843	1847	1851	1855	1859	1863	1867	1871	1875	1879	1883	1887	1891	1895	1899	1903	1907	1911	1915	1919	1923	1927	1931	1935	1939	1943	1947	1951	1955	1959	1963	1967	1971	1975	1979	1983	1987	1991	1995	1999	2003	2007	2011	2015	2019	2023	2027	2031	2035	2039	2043	2047	2051	2055	2059	2063	2067	2071	2075	2079	2083	2087	2091	2095	2099	2103	2107	2111	2115	2119	2123	2127	2131	2135	2139	2143	2147	2151	2155	2159	2163	2167	2171	2175	2179	2183	2187	2191	2195	2199	2203	2207	2211	2215	2219	2223	2227	2231	2235	2239	2243	2247	2251	2255	2259	2263	2267	2271	2275	2279	2283	2287	2291	2295	2299	2303	2307	2311	2315	2319	2323	2327	2331	2335	2339	2343	2347	2351	2355	2359	2363	2367	2371	2375	2379	2383	2387	2391	2395	2399	2403	2407	2411	2415	2419	2423	2427	2431	2435	2439	2443	2447	2451	2455	2459	2463	2467	2471	2475	2479	2483	2487	2491	2495	2499	2503	2507	2511	2515	2519	2523	2527	2531	2535	2539	2543	2547	2551	2555	2559	2563	2567	2571	2575	2579	2583	2587	2591	2595	2599	2603	2607	2611	2615	2619	2623	2627	2631	2635	2639	2643	2647	2651	2655	2659	2663	2667	2671	2675	2679	2683	2687	2691	2695	2699	2703	2707	2711	2715	2719	2723	2727	2731	2735	2739	2743	2747	2751	2755	2759	2763	2767	2771	2775	2779	2783	2787	2791	2795	2799	2803	2807	2811	2815	2819	2823	2827	2831	2835	2839	2843	2847	2851	2855	2859	2863	2867	2871	2875	2879	2883	2887	2891	2895	2899	2903	2907	2911	2915	2919	2923	2927	2931	2935	2939	2943	2947	2951	2955	2959	2963	2967	2971	2975	2979	2983	2987	2991	2995	2999	3003	3007	3011	3015	3019	3023	3027	3031	3035	3039	3043	3047	3051	3055	3059	3063	3067	3071	3075	3079	3083	3087	3091	3095	3099	3103	3107	3111	3115	3119	3123	3127	3131	3135	3139	3143	3147	3151	3155	3159	3163	3167	3171	3175	3179	3183	3187	3191	3195	3199	3203	3207	3211	3215	3219	3223	3227	3231	3235	3239	3243	3247	3251	3255	3259	3263	3267	3271	3275	3279	3283	3287	3291	3295	3299	3303	3307	3311	3315	3319	3323	3327	3331	3335	3339	3343	3347	3351	3355	3359	3363	3367	3371	3375	3379	3383	3387	3391	3395	3399	3403	3407	3411	3415	3419	3423	3427	3431	3435	3439	3443	3447	3451	3455	3459	3463	3467	3471	3475	3479	3483	3487	3491	3495	3499	3503	3507	3511	3515	3519	3523	3527	3531	3535	3539	3543	3547	3551	3555	3559	3563	3567	3571	3575	3579	3583	3587	3591	3595	3599	3603	3607	3611	3615	3619	3623	3627	3631	3635	3639	3643	3647	3651	3655	3659	3663	3667	3671	3675	3679	3683	3687	3691	3695	3699	3703	3707	3711	3715	3719	3723	3727	3731	3735	3739	3743	3747	3751	3755	3759	3763	3767	3771	3775	3779	3783	3787	3791	3795	3799	3803	3807	3811	3815	3819	3823	3827	3831	3835	3839	3843	3847	3851	3855	3859	3863	3867	3871	3875	3879	3883	3887	3891	3895	3899	3903	3907	3911	3915	3919	3923	3927	3931	3935	3939	3943	3947	3951	3955	3959	3963	3967	3971	3975	3979	3983	3987	3991	3995	3999	4003	4007	4011	4015	4019	4023	4027	4031	4035	4039	4043	4047	4051	4055	4059	4063	4067	4071	4075	4079	4083	4087	4091	4095	4099	4103	4107	4111	4115	4119	4123	4127	4131	4135	4139	4143	4147	4151	4155	4159	4163	4167	4171	4175	4179	4183	4187	4191	4195	4199	4203	4207	4211	4215	4219	4223	4227	4231	4235	4239	4243	4247	4251	4255	4259	4263	4267	4271	4275	4279	4283	4287	4291	4295	4299	4303	4307	4311	4315	4319	4323	4327	4331	4335	4339	4343	4347	4351	4355	4359	4363	4367	4371	4375	4379	4383	4387	4391	4395	4399	4403	4407	4411	4415	4419	4423	4427	4431	4435	4439	4443	4447	4451	4455	4459	4463	4467	4471	4475	4479	4483	4487	4491	4495	4499	4503	4507	4511	4515	4519	4523	4527	4531	4535	4539	4543	4547	4551	4555	4559	4563	4567	4571	4575	4579	4583	4587	4591	4595	4599	4603	4607	4611	4615	4619	4623	4627	4631	4635	4639	4643	4647	4651	4655	4659	4663	4667	4671	4675	4679	4683	4687	4691	4695	4699	4703	4707	4711	4715	4719	4723	4727	4731	4735	4739	4743	4747	4751	4755	4759	4763	4767	4771	4775	4779	4783	4787	4791	4795	4799	4803	4807	4811	4815	4819	4823	4827	4831	4835	4839	4843	4847	4851	4855	4859	4863	4867	4871	4875	4879	4883	4887	4891	4895	4899	4903	4907	4911	4915	4919	4923	4927	4931	4935	4939	4943	4947	4951	4955	4959	4963	4967	4971	4975	4979	4983	4987	4991	4995	4999	5003	5007	5011	5015	5019	5023	5027	5031	5035	5039	5043	5047	5051	5055	5059	5063	5067	5071	5075	5079	5083	5087	5091	5095	5099	5103	5107	5111	5115	5119	5123	5127	5131	5135	5139	5143	5147	5151	5155	5159	5163	5167	5171	5175	5179	5183	5187	5191	5195	5199	5203	5207	5211	5215	5219	5223	5227	5231	5235	5239	5243	5247	5251	5255	5259	5263	5267	5271	5275	5279	5283	5287	5291	5295	5299	5303	5307	5311	5315	5319	5323	5327	5331	5335	5339	5343	5347	5351	5355	5359	5363	5367	5371	5375	5379	5383	5387	5391	5395	5399	5403	5407	5411	5415	5419	5423	5427	5431	5435	5439	5443	5447	5451	5455	5459	5463	5467	5471

Detailed Cooling Capacities (Cont.)

		HDC2A036Z-EBW3600A																				
		Ambient Air Temperature Deg F/C Dry Bulb																				
		85				95				105				115		125						
		24				35				41				46		51						
IDB F/C	Airflow CFM CMH	Entering Indoor Air Temperature WB Deg																				
		59	63	67	71	59	63	67	71	59	63	67	71	59	63	67	71	59	63	67	71	
		Deg F	15	17	19	22	15	17	19	22	15	17	19	22	15	17	19	22	15	17	19	22
		Deg C	33.8	35.0	38.4	-	32.2	33.4	36.6	-	31.4	32.6	35.7	-	29.8	30.9	33.9	-	27.6	28.7	31.4	-
70	1210	MBh	9.9	10.3	11.2	-	9.4	9.8	10.7	-	9.2	9.5	10.5	-	8.7	9.1	9.9	-	8.1	8.4	9.2	-
21	2057	RW Capacity	0.73	0.61	0.42	-	0.75	0.63	0.44	-	0.80	0.67	0.46	-	1.00	1.00	1.00	-	1.00	1.00	1.00	-
		S/I	2.69	2.75	2.84	-	2.91	2.97	3.07	-	3.10	3.17	3.28	-	3.41	3.49	3.61	-	3.54	3.62	3.75	-
		RW Input	34.3	35.4	38.3	41.1	33.5	34.5	37.4	40.1	32.7	33.7	36.5	39.2	32.0	32.9	35.6	38.2	30.4	31.3	33.8	36.3
75	1210	MBh	10.1	10.4	11.2	12.0	9.8	10.1	11.0	11.8	9.6	9.9	10.7	11.5	9.4	9.6	10.4	11.2	8.9	9.2	9.9	10.6
24	2057	RW Capacity	0.83	0.74	0.56	0.36	0.86	0.77	0.58	0.37	0.88	0.79	0.60	0.38	0.91	0.81	0.61	0.40	0.94	0.84	0.64	0.41
		S/I	2.71	2.77	2.86	2.96	2.93	3.00	3.10	3.21	3.13	3.20	3.31	3.42	3.30	3.37	3.49	3.61	3.44	3.52	3.64	3.77
		RW Input	35.0	35.7	38.2	40.8	34.1	34.9	37.3	39.8	33.3	34.1	36.4	38.9	32.5	33.2	35.5	37.9	30.9	31.6	33.7	36.1
80	1210	MBh	10.2	10.5	11.2	12.0	10.0	10.2	10.9	11.7	9.8	10.0	10.7	11.4	9.5	9.7	10.4	11.1	9.1	9.3	9.9	10.6
27	2057	RW Capacity	0.91	0.85	0.69	0.52	0.94	0.88	0.72	0.54	0.96	0.90	0.74	0.55	1.00	0.93	0.76	0.57	1.00	0.97	0.79	0.59
		S/I	2.73	2.80	2.89	2.99	2.96	3.02	3.13	3.23	3.15	3.23	3.34	3.45	3.33	3.40	3.52	3.64	3.47	3.55	3.68	3.81
		RW Input	35.6	36.3	38.0	40.5	34.7	35.4	37.1	39.6	33.9	34.6	36.2	38.6	33.1	33.7	35.3	37.7	31.4	32.0	33.6	35.8
85	1210	MBh	10.4	10.6	11.1	11.9	10.2	10.4	10.9	11.6	9.9	10.1	10.6	11.3	9.7	9.9	10.4	11.0	9.2	9.4	9.8	10.5
29	2057	RW Capacity	0.95	0.92	0.83	0.67	0.99	0.95	0.86	0.70	1.00	0.98	0.88	0.71	1.00	1.00	0.91	0.74	1.00	0.94	0.77	0.59
		S/I	2.76	2.82	2.91	3.01	2.98	3.05	3.15	3.26	3.18	3.25	3.36	3.48	3.35	3.43	3.55	3.68	3.50	3.59	3.71	3.84
		RW Input	36.3	37.0	38.7	41.2	35.4	36.1	37.8	40.3	34.6	35.3	37.0	39.5	33.8	34.5	36.2	38.7	32.0	32.7	34.4	36.9

Alternate Fan Coil Factors		Airflow adjustment factors	
Model	Cap. Power	Airflow Correction	Capacity Power
EBW4200A	1.01 1.00	0.75 0.80	0.95 0.98
FSHP2W4200A/B	1.02 1.01	0.95 0.96	0.98 0.99

Detailed Cooling Capacities (Cont.)

HDC2A036Z-FSHP2W3600

IDB	AIRFLOW CFM CMH	Ambient Air Temperature Deg F/C Dry Bulb												Entering Indoor Air Temperature WB Deg																	
		65				75				85				95				105				115				125					
		18	24	30	36	18	24	30	36	18	24	30	36	18	24	30	36	18	24	30	36	18	24	30	36	18	24	30	36		
70	1076	32.2	33.3	36.5	31.4	32.6	35.7	30.7	31.8	34.8	29.9	31.0	34.0	28.4	29.5	32.3	26.3	27.3	29.9	22.6	23.5	25.7	19	22	25.1	26.6	28.8	31.1	33.4	35.7	
21	1829	9.4	9.8	10.7	9.2	9.5	10.5	9.0	9.3	10.2	8.8	9.1	10.0	8.3	8.6	9.5	7.7	8.0	8.8	6.6	6.9	7.5	15	17	19	21.6	23.1	24.6	26.1	27.6	
75	1076	0.69	0.68	0.40	0.71	0.60	0.41	0.73	0.61	0.42	0.76	0.63	0.44	0.70	0.58	0.45	0.64	0.52	0.40	0.28	0.16	0.04	15	17	19	21.6	23.1	24.6	26.1	27.6	
24	1829	2.73	2.79	2.88	2.95	3.02	3.12	3.15	3.23	3.34	3.33	3.41	3.53	3.48	3.56	3.69	3.61	3.69	3.82	3.89	3.99	4.13	22	25	28	30.7	32.2	33.7	35.2	36.7	
80	1076	32.7	33.7	36.4	31.9	32.9	35.6	38.2	32.1	32.1	34.7	37.3	30.4	31.3	33.9	36.4	28.9	29.8	32.2	34.6	26.8	27.6	29.8	22	25	28	30.7	32.2	33.7	35.2	36.7
27	1829	9.6	9.9	10.7	11.5	9.4	9.6	10.4	11.2	9.1	9.4	10.2	10.9	8.9	9.2	9.9	10.7	8.5	8.7	9.4	10.1	7.8	8.1	8.7	9.4	10.1	10.8	11.5	12.2	12.9	13.6
85	1076	0.78	0.70	0.53	0.34	0.81	0.73	0.55	0.35	0.83	0.75	0.56	0.36	0.86	0.77	0.58	0.37	0.89	0.80	0.60	0.39	0.90	0.81	0.61	0.39	0.90	0.81	0.61	0.39	0.90	0.81
29	1829	2.77	2.84	2.93	3.04	3.01	3.07	3.18	3.29	3.21	3.28	3.40	3.52	3.39	3.47	3.59	3.72	3.54	3.63	3.75	3.89	3.67	3.76	3.89	4.03	3.96	4.06	4.20	4.35	4.50	
85	1076	33.9	34.5	36.2	38.6	33.1	33.7	35.3	37.7	32.3	32.9	34.5	36.8	31.5	32.1	33.6	35.9	29.9	30.5	31.9	34.1	27.7	28.3	29.6	31.6	23.8	24.3	25.5	27.2	28.9	
29	1829	9.9	10.1	10.6	11.3	9.7	9.9	10.4	11.0	9.5	9.6	10.1	10.8	9.2	9.4	9.9	10.5	8.8	8.9	9.4	10.0	8.1	8.3	8.7	9.3	7.0	7.1	7.5	8.0	8.6	
85	1076	0.90	0.87	0.79	0.64	0.93	0.90	0.81	0.66	0.96	0.92	0.83	0.68	0.99	0.95	0.86	0.70	1.00	0.99	0.89	0.73	1.00	0.99	0.89	0.73	1.00	0.90	0.73	1.00	0.76	
29	1829	2.80	2.86	2.96	3.06	3.03	3.10	3.21	3.32	3.24	3.31	3.43	3.55	3.42	3.50	3.62	3.75	3.57	3.66	3.79	3.92	3.71	3.79	3.93	4.07	4.00	4.09	4.24	4.39		

Alternate Fan Coil Factors		Airflow adjustment factors	
Model	Power	Airflow Correction	Capacity
EBW4200A	1.00	0.95	0.98
FSHP2W4200A/B	1.02	0.96	0.99

Detailed Cooling Capacities (Cont.)

Airflow		HDC2A048Z- EBW4800A													
		Ambient Air Temperature Deg F/C Dry Bulb													
		75				85				105				115	
IDB	F/C	65	75	85	95	105	115	125	18	24	29	35	41	46	51
70	Deg F	59	63	67	71	75	79	83	87	91	95	99	103	107	111
	Deg C	15	17	19	22	24	26	28	30	32	35	37	39	41	43
21	MBh	48.0	49.8	51.6	53.4	55.2	57.0	58.8	60.6	62.4	64.2	66.0	67.8	69.6	71.4
	kW Capacity	14.1	14.6	15.1	15.6	16.1	16.6	17.1	17.6	18.1	18.6	19.1	19.6	20.1	20.6
75	S/F	0.72	0.60	0.42	0.34	0.26	0.18	0.10	0.02	0.04	0.12	0.20	0.28	0.36	0.44
	kW Input	3.86	3.95	4.08	4.18	4.27	4.32	4.37	4.42	4.47	4.52	4.57	4.62	4.67	4.72
24	MBh	48.9	50.3	51.7	53.1	54.5	55.9	57.3	58.7	60.1	61.5	62.9	64.3	65.7	67.1
	kW Capacity	14.3	14.7	15.1	15.5	15.9	16.3	16.7	17.1	17.5	17.9	18.3	18.7	19.1	19.5
80	S/F	0.82	0.73	0.65	0.57	0.49	0.41	0.33	0.25	0.17	0.09	0.01	0.03	0.11	0.19
	kW Input	3.89	3.98	4.12	4.26	4.41	4.55	4.70	4.84	4.99	5.13	5.28	5.42	5.57	5.71
27	MBh	49.7	50.8	51.9	53.0	54.1	55.2	56.3	57.4	58.5	59.6	60.7	61.8	62.9	64.0
	kW Capacity	14.6	14.9	15.2	15.5	15.8	16.1	16.4	16.7	17.0	17.3	17.6	17.9	18.2	18.5
85	S/F	0.90	0.84	0.68	0.51	0.33	0.15	0.07	0.09	0.17	0.25	0.33	0.41	0.49	0.57
	kW Input	3.93	4.02	4.15	4.29	4.43	4.57	4.71	4.85	4.99	5.13	5.27	5.41	5.55	5.69
29	MBh	50.6	51.6	52.6	53.6	54.6	55.6	56.6	57.6	58.6	59.6	60.6	61.6	62.6	63.6
	kW Capacity	14.8	15.1	15.4	15.7	16.0	16.3	16.6	16.9	17.2	17.5	17.8	18.1	18.4	18.7
88	S/F	0.94	0.91	0.82	0.66	0.49	0.32	0.15	0.07	0.09	0.17	0.25	0.33	0.41	0.49
	kW Input	3.96	4.05	4.19	4.33	4.47	4.61	4.75	4.89	5.03	5.17	5.31	5.45	5.59	5.73

Alternate Fan Coil Factors		Airflow adjustment factors		
Model	Cap.	Power	Airflow Correction	Capacity
EBW6000A	1.03	0.98	0.95	0.99
			0.96	0.99
			0.97	1.00

Detailed Cooling Capacities (Cont.)

Airflow		Ambient Air Temperature Deg F/C Dry Bulb																																																																																																																																																																																																																																																																																																																																																																																																																																																																																																																																																																																																																																																																																																																																																																																																																																																																																																																																																																																																																																																																																																																																																																																																																																																																																																																																																																																																
		75				85				95				105				115				125																																																																																																																																																																																																																																																																																																																																																																																																																																																																																																																																																																																																																																																																																																																																																																																																																																																																																																																																																																																																																																																																																																																																																																																																																																																																																																																																																																												
		18		24		29		35		41		46		51		57		63		69		75		81		87		93		99		105		111		117		123																																																																																																																																																																																																																																																																																																																																																																																																																																																																																																																																																																																																																																																																																																																																																																																																																																																																																																																																																																																																																																																																																																																																																																																																																																																																																																																																																												
IDB	CFM	59	63	67	71	75	79	83	87	91	95	99	103	107	111	115	119	123	127	131	135	139	143	147	151	155	159	163	167	171	175	179	183	187	191	195	199	203	207	211	215	219	223	227	231	235	239	243	247	251	255	259	263	267	271	275	279	283	287	291	295	299	303	307	311	315	319	323	327	331	335	339	343	347	351	355	359	363	367	371	375	379	383	387	391	395	399	403	407	411	415	419	423	427	431	435	439	443	447	451	455	459	463	467	471	475	479	483	487	491	495	499	503	507	511	515	519	523	527	531	535	539	543	547	551	555	559	563	567	571	575	579	583	587	591	595	599	603	607	611	615	619	623	627	631	635	639	643	647	651	655	659	663	667	671	675	679	683	687	691	695	699	703	707	711	715	719	723	727	731	735	739	743	747	751	755	759	763	767	771	775	779	783	787	791	795	799	803	807	811	815	819	823	827	831	835	839	843	847	851	855	859	863	867	871	875	879	883	887	891	895	899	903	907	911	915	919	923	927	931	935	939	943	947	951	955	959	963	967	971	975	979	983	987	991	995	999	1003	1007	1011	1015	1019	1023	1027	1031	1035	1039	1043	1047	1051	1055	1059	1063	1067	1071	1075	1079	1083	1087	1091	1095	1099	1103	1107	1111	1115	1119	1123	1127	1131	1135	1139	1143	1147	1151	1155	1159	1163	1167	1171	1175	1179	1183	1187	1191	1195	1199	1203	1207	1211	1215	1219	1223	1227	1231	1235	1239	1243	1247	1251	1255	1259	1263	1267	1271	1275	1279	1283	1287	1291	1295	1299	1303	1307	1311	1315	1319	1323	1327	1331	1335	1339	1343	1347	1351	1355	1359	1363	1367	1371	1375	1379	1383	1387	1391	1395	1399	1403	1407	1411	1415	1419	1423	1427	1431	1435	1439	1443	1447	1451	1455	1459	1463	1467	1471	1475	1479	1483	1487	1491	1495	1499	1503	1507	1511	1515	1519	1523	1527	1531	1535	1539	1543	1547	1551	1555	1559	1563	1567	1571	1575	1579	1583	1587	1591	1595	1599	1603	1607	1611	1615	1619	1623	1627	1631	1635	1639	1643	1647	1651	1655	1659	1663	1667	1671	1675	1679	1683	1687	1691	1695	1699	1703	1707	1711	1715	1719	1723	1727	1731	1735	1739	1743	1747	1751	1755	1759	1763	1767	1771	1775	1779	1783	1787	1791	1795	1799	1803	1807	1811	1815	1819	1823	1827	1831	1835	1839	1843	1847	1851	1855	1859	1863	1867	1871	1875	1879	1883	1887	1891	1895	1899	1903	1907	1911	1915	1919	1923	1927	1931	1935	1939	1943	1947	1951	1955	1959	1963	1967	1971	1975	1979	1983	1987	1991	1995	1999	2003	2007	2011	2015	2019	2023	2027	2031	2035	2039	2043	2047	2051	2055	2059	2063	2067	2071	2075	2079	2083	2087	2091	2095	2099	2103	2107	2111	2115	2119	2123	2127	2131	2135	2139	2143	2147	2151	2155	2159	2163	2167	2171	2175	2179	2183	2187	2191	2195	2199	2203	2207	2211	2215	2219	2223	2227	2231	2235	2239	2243	2247	2251	2255	2259	2263	2267	2271	2275	2279	2283	2287	2291	2295	2299	2303	2307	2311	2315	2319	2323	2327	2331	2335	2339	2343	2347	2351	2355	2359	2363	2367	2371	2375	2379	2383	2387	2391	2395	2399	2403	2407	2411	2415	2419	2423	2427	2431	2435	2439	2443	2447	2451	2455	2459	2463	2467	2471	2475	2479	2483	2487	2491	2495	2499	2503	2507	2511	2515	2519	2523	2527	2531	2535	2539	2543	2547	2551	2555	2559	2563	2567	2571	2575	2579	2583	2587	2591	2595	2599	2603	2607	2611	2615	2619	2623	2627	2631	2635	2639	2643	2647	2651	2655	2659	2663	2667	2671	2675	2679	2683	2687	2691	2695	2699	2703	2707	2711	2715	2719	2723	2727	2731	2735	2739	2743	2747	2751	2755	2759	2763	2767	2771	2775	2779	2783	2787	2791	2795	2799	2803	2807	2811	2815	2819	2823	2827	2831	2835	2839	2843	2847	2851	2855	2859	2863	2867	2871	2875	2879	2883	2887	2891	2895	2899	2903	2907	2911	2915	2919	2923	2927	2931	2935	2939	2943	2947	2951	2955	2959	2963	2967	2971	2975	2979	2983	2987	2991	2995	2999	3003	3007	3011	3015	3019	3023	3027	3031	3035	3039	3043	3047	3051	3055	3059	3063	3067	3071	3075	3079	3083	3087	3091	3095	3099	3103	3107	3111	3115	3119	3123	3127	3131	3135	3139	3143	3147	3151	3155	3159	3163	3167	3171	3175	3179	3183	3187	3191	3195	3199	3203	3207	3211	3215	3219	3223	3227	3231	3235	3239	3243	3247	3251	3255	3259	3263	3267	3271	3275	3279	3283	3287	3291	3295	3299	3303	3307	3311	3315	3319	3323	3327	3331	3335	3339	3343	3347	3351	3355	3359	3363	3367	3371	3375	3379	3383	3387	3391	3395	3399	3403	3407	3411	3415	3419	3423	3427	3431	3435	3439	3443	3447	3451	3455	3459	3463	3467	3471	3475	3479	3483	3487	3491	3495	3499	3503	3507	3511	3515	3519	3523	3527	3531	3535	3539	3543	3547	3551	3555	3559	3563	3567	3571	3575	3579	3583	3587	3591	3595	3599	3603	3607	3611	3615	3619	3623	3627	3631	3635	3639	3643	3647	3651	3655	3659	3663	3667	3671	3675	3679	3683	3687	3691	3695	3699	3703	3707	3711	3715	3719	3723	3727	3731	3735	3739	3743	3747	3751	3755	3759	3763	3767	3771	3775	3779	3783	3787	3791	3795	3799	3803	3807	3811	3815	3819	3823	3827	3831	3835	3839	3843	3847	3851	3855	3859	3863	3867	3871	3875	3879	3883	3887	3891	3895	3899	3903	3907	3911	3915	3919	3923	3927	3931	3935	3939	3943	3947	3951	3955	3959	3963	3967	3971	3975	3979	3983	3987	3991	3995	3999	4003	4007	4011	4015	4019	4023	4027	4031	4035	4039	4043	4047	4051	4055	4059	4063	4067	4071	4075	4079	4083	4087	4091	4095	4099	4103	4107	4111	4115	4119	4123	4127	4131	4135	4139	4143	4147	4151	4155	4159	4163	4167	4171	4175	4179	4183	4187	4191	4195	4199	4203	4207	4211	4215	4219	4223	4227	4231	4235	4239	4243	4247	4251	4255	4259	4263	4267	4271	4275	4279	4283	4287	4291	4295	4299	4303	4307	4311	4315	4319	4323	4327	4331	4335	4339	4343	4347	4351	4355	4359	4363	4367	4371	4375	4379	4383	4387	4391	4395	4399	4403	4407	4411	4415	4419	4423	4427	4431	4435	4439	4443	4447	4451	4455	4459	4463	4467	4471	4475	4479	4483	4487	4491	4495	4499	4503	4507	4511	4515	4519	4523	4527	4531	4535	4539	4543	4547	4551	4555	4559	4563	4567	4571	4575	4579	4583	4587	4591	4595	4599	4603	4607	4611	4615	4619	4623	4627	4631	4635	4639	4643	4647	4651	4655	4659	4663	4667	4671	4675	4679	4683	4687	4691	4695	4699	4703	4707	4711	4715	4719	4723	4727	4731	4735	4739	4743	4747	4751	4755	4759	4763	4767	4771	4775	4779	4783	4787	4791	4795	4799	4803	4807	4811	4815	4819	4823	4827	4831	4835	4839	4843	4847	4851	4855	4859	4863	4867	4871	4875	4879	4883	4887	4891	4895	4899	4903	4907	4911	4915	4919	4923	4927	4931	4935	4939	4943	4947	4951	4955	4959	4963	4967	4971	4975	4979	4983	4987	4991	4995	4999	5003	5007	5011	5015	5019	5023	5027	5031	5035	5039	5043	5047	5051	5055	5059	5063	5067	5071	5075	5079	5083	5087	5091	5095	5099	5103	5107	5111	5115	5119	5123	5127	5131	5135	5139	5143	5147	5151	5155	5159	5163	5167	5171	5175	5179	5183	5187	5191	5195	5199	5203	5207	5211	5215	5219	5223	5227	5231	5235	5239	5243	5247	5251	5255	5259	5263	5267	5271	5275	5279	5283	5287	5291	5295	5299	5303	5307	5311	5315	5319	5323	5327	5331	5335	5339	5343	5347	5351	5355	5359	5363	5367	5371	5375	5379	5383	5387	5391	5395	5399	5403	5407	5411	5415	5419	5423	5427	5431	5435

Detailed Cooling Capacities (Cont.)

Airflow		Ambient Air Temperature Deg F/C Dry Bulb																						
		75				85				95				105				115						
		65		18		75		24		85		29		95		35		105		41		115		46
IDB	F/C	59	63	67	71	75	79	83	87	91	95	99	103	107	111	115	119	123	127	131	135	139	143	
	Deg F	59	63	67	71	75	79	83	87	91	95	99	103	107	111	115	119	123	127	131	135	139	143	
	Deg C	15	17	19	22	24	26	28	30	32	35	37	39	41	43	46	48	50	52	54	56	58	60	
70	1788	52.9	54.8	60.1	-	51.7	53.6	58.7	-	50.4	52.3	57.3	-	49.2	51.0	55.9	-	46.7	48.5	53.1	-	43.3	44.9	49.2
	3040	15.5	16.1	17.6	-	15.1	15.7	17.2	-	14.8	15.3	16.8	-	14.4	14.9	16.4	-	13.7	14.2	15.6	-	12.7	13.2	14.4
21	1788	0.70	0.58	0.40	-	0.72	0.61	0.42	-	0.74	0.62	0.43	-	0.77	0.64	0.44	-	1.00	1.00	1.00	-	1.00	1.00	1.00
	3040	4.56	4.67	4.83	-	4.94	5.06	5.23	-	5.28	5.40	5.59	-	5.57	5.70	5.90	-	5.82	5.96	6.17	-	6.04	6.18	6.40
75	1788	53.8	55.4	59.9	64.3	52.5	54.1	58.6	62.8	51.3	52.8	57.2	61.3	50.0	51.5	55.8	59.9	47.5	48.9	53.0	56.9	44.0	45.3	49.1
	3040	15.8	16.2	17.6	18.9	15.4	15.9	17.2	18.4	15.0	15.5	16.8	18.0	14.7	15.1	16.3	17.5	13.9	14.3	15.5	16.7	12.9	13.3	14.4
24	1788	0.79	0.71	0.54	0.35	0.82	0.74	0.56	0.36	0.84	0.76	0.57	0.37	0.87	0.78	0.59	0.38	0.90	0.81	0.61	0.39	0.91	0.82	0.62
	3040	4.60	4.71	4.87	5.04	4.99	5.10	5.28	5.46	5.32	5.45	5.64	5.84	5.62	5.75	5.96	6.17	5.88	6.02	6.23	6.45	6.09	6.24	6.46
80	1788	54.7	55.9	59.8	63.9	53.5	54.6	58.4	62.4	52.2	53.3	57.0	60.9	50.9	52.0	55.6	59.4	48.4	49.4	52.8	56.5	44.8	45.8	48.9
	3040	16.0	16.4	17.5	18.7	15.7	16.0	17.1	18.3	15.3	15.6	16.7	17.9	14.9	15.3	16.3	17.4	14.2	14.5	15.5	16.5	13.1	13.4	14.3
27	1788	0.87	0.82	0.67	0.50	0.90	0.85	0.69	0.52	0.93	0.87	0.71	0.53	0.96	0.90	0.73	0.55	0.99	0.93	0.76	0.57	1.00	0.94	0.76
	3040	4.64	4.75	4.91	5.08	5.03	5.15	5.32	5.51	5.37	5.50	5.69	5.89	5.67	5.81	6.01	6.22	5.93	6.07	6.28	6.51	6.15	6.30	6.52
85	1788	55.7	56.8	59.5	63.4	54.4	55.5	58.1	62.0	53.1	54.1	56.7	60.5	51.8	52.8	55.3	59.0	49.2	50.2	52.6	56.1	45.6	46.5	48.7
	3040	16.3	16.6	17.4	18.6	15.9	16.3	17.0	18.2	15.6	15.9	16.6	17.7	15.2	15.5	16.2	17.3	14.4	14.7	15.4	16.4	13.4	13.6	14.3
29	1788	0.91	0.88	0.80	0.65	0.95	0.91	0.82	0.67	0.97	0.94	0.85	0.69	1.00	0.97	0.87	0.71	1.00	1.00	0.91	0.74	1.00	1.00	0.91
	3040	4.68	4.79	4.95	5.13	5.07	5.19	5.37	5.56	5.42	5.55	5.74	5.94	5.72	5.86	6.06	6.28	5.98	6.12	6.34	6.57	6.20	6.35	6.58

Airflow adjustment factors	
Airflow Correction	0.75 0.80 0.85 0.90 0.95
Capacity	0.95 0.96 0.97 0.98 0.99
Power	0.96 0.97 0.98 0.99 1.00

Detailed Cooling Capacities (Cont.)

Airflow		Ambient Air Temperature Deg F/C Dry Bulb																																																																																																																																																																																																																																																																																																																																																																																																																																																																																																																																																																																																																																																																																																																																																																																																																																																																																																																																																																																																																																																																																																																																																																																																																																																																																																																																																																																																
		65				75				85				95				105				115				125																																																																																																																																																																																																																																																																																																																																																																																																																																																																																																																																																																																																																																																																																																																																																																																																																																																																																																																																																																																																																																																																																																																																																																																																																																																																																																																																																																								
		18		24		29		35		41		46		51		57		63		69		75		81		87		93		99		105		111		117		123																																																																																																																																																																																																																																																																																																																																																																																																																																																																																																																																																																																																																																																																																																																																																																																																																																																																																																																																																																																																																																																																																																																																																																																																																																																																																																																																																												
IDB	F/C	59	63	67	71	75	79	83	87	91	95	99	103	107	111	115	119	123	127	131	135	139	143	147	151	155	159	163	167	171	175	179	183	187	191	195	199	203	207	211	215	219	223	227	231	235	239	243	247	251	255	259	263	267	271	275	279	283	287	291	295	299	303	307	311	315	319	323	327	331	335	339	343	347	351	355	359	363	367	371	375	379	383	387	391	395	399	403	407	411	415	419	423	427	431	435	439	443	447	451	455	459	463	467	471	475	479	483	487	491	495	499	503	507	511	515	519	523	527	531	535	539	543	547	551	555	559	563	567	571	575	579	583	587	591	595	599	603	607	611	615	619	623	627	631	635	639	643	647	651	655	659	663	667	671	675	679	683	687	691	695	699	703	707	711	715	719	723	727	731	735	739	743	747	751	755	759	763	767	771	775	779	783	787	791	795	799	803	807	811	815	819	823	827	831	835	839	843	847	851	855	859	863	867	871	875	879	883	887	891	895	899	903	907	911	915	919	923	927	931	935	939	943	947	951	955	959	963	967	971	975	979	983	987	991	995	999	1003	1007	1011	1015	1019	1023	1027	1031	1035	1039	1043	1047	1051	1055	1059	1063	1067	1071	1075	1079	1083	1087	1091	1095	1099	1103	1107	1111	1115	1119	1123	1127	1131	1135	1139	1143	1147	1151	1155	1159	1163	1167	1171	1175	1179	1183	1187	1191	1195	1199	1203	1207	1211	1215	1219	1223	1227	1231	1235	1239	1243	1247	1251	1255	1259	1263	1267	1271	1275	1279	1283	1287	1291	1295	1299	1303	1307	1311	1315	1319	1323	1327	1331	1335	1339	1343	1347	1351	1355	1359	1363	1367	1371	1375	1379	1383	1387	1391	1395	1399	1403	1407	1411	1415	1419	1423	1427	1431	1435	1439	1443	1447	1451	1455	1459	1463	1467	1471	1475	1479	1483	1487	1491	1495	1499	1503	1507	1511	1515	1519	1523	1527	1531	1535	1539	1543	1547	1551	1555	1559	1563	1567	1571	1575	1579	1583	1587	1591	1595	1599	1603	1607	1611	1615	1619	1623	1627	1631	1635	1639	1643	1647	1651	1655	1659	1663	1667	1671	1675	1679	1683	1687	1691	1695	1699	1703	1707	1711	1715	1719	1723	1727	1731	1735	1739	1743	1747	1751	1755	1759	1763	1767	1771	1775	1779	1783	1787	1791	1795	1799	1803	1807	1811	1815	1819	1823	1827	1831	1835	1839	1843	1847	1851	1855	1859	1863	1867	1871	1875	1879	1883	1887	1891	1895	1899	1903	1907	1911	1915	1919	1923	1927	1931	1935	1939	1943	1947	1951	1955	1959	1963	1967	1971	1975	1979	1983	1987	1991	1995	1999	2003	2007	2011	2015	2019	2023	2027	2031	2035	2039	2043	2047	2051	2055	2059	2063	2067	2071	2075	2079	2083	2087	2091	2095	2099	2103	2107	2111	2115	2119	2123	2127	2131	2135	2139	2143	2147	2151	2155	2159	2163	2167	2171	2175	2179	2183	2187	2191	2195	2199	2203	2207	2211	2215	2219	2223	2227	2231	2235	2239	2243	2247	2251	2255	2259	2263	2267	2271	2275	2279	2283	2287	2291	2295	2299	2303	2307	2311	2315	2319	2323	2327	2331	2335	2339	2343	2347	2351	2355	2359	2363	2367	2371	2375	2379	2383	2387	2391	2395	2399	2403	2407	2411	2415	2419	2423	2427	2431	2435	2439	2443	2447	2451	2455	2459	2463	2467	2471	2475	2479	2483	2487	2491	2495	2499	2503	2507	2511	2515	2519	2523	2527	2531	2535	2539	2543	2547	2551	2555	2559	2563	2567	2571	2575	2579	2583	2587	2591	2595	2599	2603	2607	2611	2615	2619	2623	2627	2631	2635	2639	2643	2647	2651	2655	2659	2663	2667	2671	2675	2679	2683	2687	2691	2695	2699	2703	2707	2711	2715	2719	2723	2727	2731	2735	2739	2743	2747	2751	2755	2759	2763	2767	2771	2775	2779	2783	2787	2791	2795	2799	2803	2807	2811	2815	2819	2823	2827	2831	2835	2839	2843	2847	2851	2855	2859	2863	2867	2871	2875	2879	2883	2887	2891	2895	2899	2903	2907	2911	2915	2919	2923	2927	2931	2935	2939	2943	2947	2951	2955	2959	2963	2967	2971	2975	2979	2983	2987	2991	2995	2999	3003	3007	3011	3015	3019	3023	3027	3031	3035	3039	3043	3047	3051	3055	3059	3063	3067	3071	3075	3079	3083	3087	3091	3095	3099	3103	3107	3111	3115	3119	3123	3127	3131	3135	3139	3143	3147	3151	3155	3159	3163	3167	3171	3175	3179	3183	3187	3191	3195	3199	3203	3207	3211	3215	3219	3223	3227	3231	3235	3239	3243	3247	3251	3255	3259	3263	3267	3271	3275	3279	3283	3287	3291	3295	3299	3303	3307	3311	3315	3319	3323	3327	3331	3335	3339	3343	3347	3351	3355	3359	3363	3367	3371	3375	3379	3383	3387	3391	3395	3399	3403	3407	3411	3415	3419	3423	3427	3431	3435	3439	3443	3447	3451	3455	3459	3463	3467	3471	3475	3479	3483	3487	3491	3495	3499	3503	3507	3511	3515	3519	3523	3527	3531	3535	3539	3543	3547	3551	3555	3559	3563	3567	3571	3575	3579	3583	3587	3591	3595	3599	3603	3607	3611	3615	3619	3623	3627	3631	3635	3639	3643	3647	3651	3655	3659	3663	3667	3671	3675	3679	3683	3687	3691	3695	3699	3703	3707	3711	3715	3719	3723	3727	3731	3735	3739	3743	3747	3751	3755	3759	3763	3767	3771	3775	3779	3783	3787	3791	3795	3799	3803	3807	3811	3815	3819	3823	3827	3831	3835	3839	3843	3847	3851	3855	3859	3863	3867	3871	3875	3879	3883	3887	3891	3895	3899	3903	3907	3911	3915	3919	3923	3927	3931	3935	3939	3943	3947	3951	3955	3959	3963	3967	3971	3975	3979	3983	3987	3991	3995	3999	4003	4007	4011	4015	4019	4023	4027	4031	4035	4039	4043	4047	4051	4055	4059	4063	4067	4071	4075	4079	4083	4087	4091	4095	4099	4103	4107	4111	4115	4119	4123	4127	4131	4135	4139	4143	4147	4151	4155	4159	4163	4167	4171	4175	4179	4183	4187	4191	4195	4199	4203	4207	4211	4215	4219	4223	4227	4231	4235	4239	4243	4247	4251	4255	4259	4263	4267	4271	4275	4279	4283	4287	4291	4295	4299	4303	4307	4311	4315	4319	4323	4327	4331	4335	4339	4343	4347	4351	4355	4359	4363	4367	4371	4375	4379	4383	4387	4391	4395	4399	4403	4407	4411	4415	4419	4423	4427	4431	4435	4439	4443	4447	4451	4455	4459	4463	4467	4471	4475	4479	4483	4487	4491	4495	4499	4503	4507	4511	4515	4519	4523	4527	4531	4535	4539	4543	4547	4551	4555	4559	4563	4567	4571	4575	4579	4583	4587	4591	4595	4599	4603	4607	4611	4615	4619	4623	4627	4631	4635	4639	4643	4647	4651	4655	4659	4663	4667	4671	4675	4679	4683	4687	4691	4695	4699	4703	4707	4711	4715	4719	4723	4727	4731	4735	4739	4743	4747	4751	4755	4759	4763	4767	4771	4775	4779	4783	4787	4791	4795	4799	4803	4807	4811	4815	4819	4823	4827	4831	4835	4839	4843	4847	4851	4855	4859	4863	4867	4871	4875	4879	4883	4887	4891	4895	4899	4903	4907	4911	4915	4919	4923	4927	4931	4935	4939	4943	4947	4951	4955	4959	4963	4967	4971	4975	4979	4983	4987	4991	4995	4999	5003	5007	5011	5015	5019	5023	5027	5031	5035	5039	5043	5047	5051	5055	5059	5063	5067	5071	5075	5079	5083	5087	5091	5095	5099	5103	5107	5111	5115	5119	5123	5127	5131	5135	5139	5143	5147	5151	5155	5159	5163	5167	5171	5175	5179	5183	5187	5191	5195	5199	5203	5207	5211	5215	5219	5223	5227	5231	5235	5239	5243	5247	5251	5255	5259	5263	5267	5271	5275	5279	5283	5287	5291	5295	5299	5303	5307	5311	5315	5319	5323	5327	5331	5335	5339	5343	5347	5351	5355	5359	5363	5367	5371	5375	5379	5383	5387	5391	5395	5399	5403	5407	5411	5415	5419	5423	5427	5431	5